

ELEMENTi®

TERINA PRO



FEATURING
ILLUMINATION
AVANTECH YOU
TECHNOLOGY
BY HETTICH

TERINA PRO

WHERE COLOUR AND LIGHTING HAS BEEN THE FOCUS IN ALL ASPECTS OF INTERIOR DESIGN, NOW TOO IS IT CUSTOMISABLE ON THE INSIDE AND OUT WITH TERINA PRO!

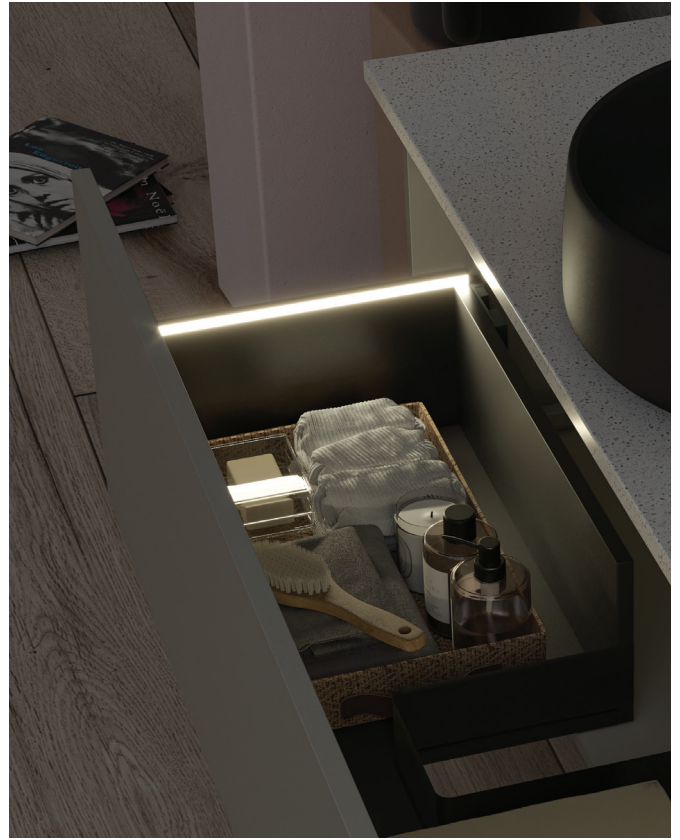
AvanTech YOU is a design conscious home owner's dream offering exceptional quality and performance.

With design focused innovations in AvanTech YOU hardware and AvanTech Illumination Terina Pro offers a broad choice of colours, materials and options! It is the perfect range for New Zealand's bespoke build culture. Where colour and lighting has been the focus in all aspects of interior design, now too is it customisable on the inside and out!

All adjustments and fittings are housed internally inside a modern anthracite casing, all for an uninterrupted inner aesthetic. This gives you a look like nothing else on the market. The premium quality of AvanTech YOU mean you'll have cabinetry that works flawlessly for years to come with a Lifetime guarantee on Hettich hardware*.

*Warranty excludes battery, lighting and electrical components





FEATURES

HETTICH AVANTECH YOU

The Terina Pro collection incorporates the state of the art Hettich AvanTech YOU system in all drawers. Offering exceptional design, functionality, adjustment and performance.



AVANTECH YOU ILLUMINATION

A beautiful lighting system integrates elegantly into the drawer. Triggered by opening the drawer a timer ensures power is not wasted and will automatically shut off after 30 seconds or by closing the drawer. Exceptionally long battery life with micro USB charger included.



DRAWER ADJUSTMENT

The adjustment capabilities are second to none. Adjust vertically, laterally or tilt to obtain optimum alignment of your front panel. All whilst being cleverly hidden inside the stylish anthracite frame.



STRUCTURAL STABILITY

Premium Quadro YOU runners are made from durable galvanised stainless steel and feature a robust 30kg drawer weight limit. Providing an exceptionally stable platform for larger drawers.



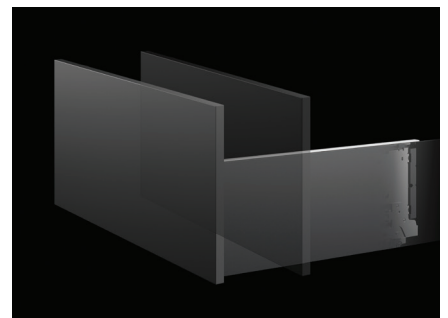
INGENIOUS DESIGN

A meticulously crafted anthracite drawer conceals the drawer mechanism within a sleek 13mm housing. Offering full sides and an uninterrupted appearance enabled by invisible screws and fittings creating a modern foundation on which to build your space.



SOFT CLOSE DRAWERS

All Terina Pro vanities incorporate premium soft close drawers on a silent slide system.



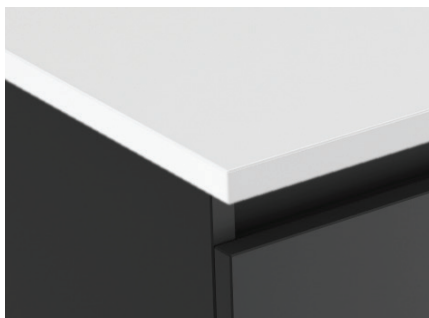
MOISTURE RESISTANT

Elementi vanities are made from a moisture resistant board with a ventilation gap incorporated to reduce the risk of moisture build-up. A protective edge tape is also applied for improved edge durability.



DURABLE ELESTONE FLAT TOP

EleStone is an Acrylic Premium Solid Surface providing a sleek modern appearance, a seamless surface coupled with non-porous and hygienic properties.



MANUFACTURED IN NEW ZEALAND

Elementi furniture is manufactured in New Zealand, using high quality materials combined with superior craftsmanship to produce innovative and beautiful bathroom furniture of the highest standard that will last for years to come.



MULTIPLE DESIGN AWARDS

Hettich AvanTech YOU has been recognised globally for exceptional innovation in design.

2021 Interzum Award

2021 Good Design Award

2022 Red Dot Design Award



GOOD
DESIGN



reddot award

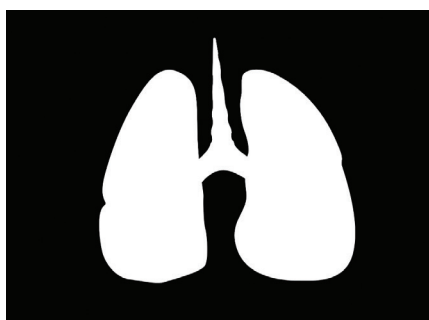
SILICA FREE

Elementi EleStone is silica free, allowing joiners and cabinet makers to manufacture and install our cabinet tops risk free, as well as ensuring the protection of our customers.

GUARANTEED QUALITY

Hettich offers a Lifetime guarantee on hardware*. Elementi Cabinets carry a 5 Year Guarantee. EleStone Tops carry a 10 Year Guarantee.

*Warranty excludes battery, lighting and electrical components. All guarantees are subject to terms and conditions and available on request or can be viewed at: www.robertson.co.nz/warranties





ELESTONE
TOP DRILLABLE
ON SITE

TERINA PRO

750 TERINA PRO SINGLE BOWL WALL VANITY CABINET

740(L) X 460(W) X 415(H) / 1 X DRAWER
ELESTONE FLAT TOP:
82220 --- -PL + . ---



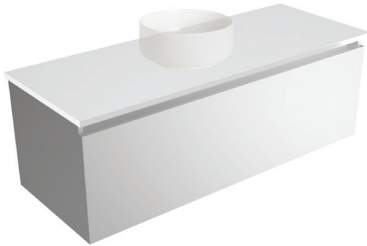
900 TERINA PRO SINGLE BOWL WALL VANITY CABINET

890(L) X 460(W) X 415(H) / 1 X DRAWER
ELESTONE FLAT TOP:
82230 --- -PL + . ---



1200 TERINA PRO SINGLE BOWL WALL VANITY CABINET

1190(L) X 460(W) X 415(H) / 1 X DRAWER
ELESTONE FLAT TOP:
82240 --- -PL + . ---



CABINET FINISHES

Select finish code below e.g. 750 Terina Wall Vanity with White EleStone Flat Top in Dezinga White Gloss: 82220EWH -PL.11



.11
Dezinga
White Gloss



.73
Fiordland Elm
Wilderness



.77
French
Oak Velvet



.82
Black
Timberland



.83
Smokey Oak
Timberland



.84
Ashen Walnut
Timberland



.50
Seasoned
Oak



.91
White Linen
Matte



.92
Sky Scraper
Matte



.93
Jute
Matte



.94
Metallic Dune
Matte



.95
Metallic Coal
Matte



.96
Cinder
Matte



.97
Pitch Black
Matte

1200 TERINA PRO WALL VANITY CABINET

1190(L) X 460(W) X 415(H) / 2 X DRAWER

DOUBLE BOWL

ELESTONE FLAT TOP:

82250 ___-PL + . ___



1500 TERINA PRO WALL VANITY CABINET

1490(L) X 460(W) X 415(H) / 2 X DRAWER

DOUBLE BOWL

ELESTONE FLAT TOP:

82260 ___-PL + . ___



1800 TERINA PRO WALL VANITY CABINET

1790(L) X 460(W) X 415(H) / 2 X DRAWER

DOUBLE BOWL

ELESTONE FLAT TOP:

82270 ___-PL + . ___



SINGLE LEFT BOWL

ELESTONE FLAT TOP:

82252 ___-PL + . ___



SINGLE LEFT BOWL

ELESTONE FLAT TOP:

82262 ___-PL + . ___



SINGLE LEFT BOWL

ELESTONE FLAT TOP:

82272 ___-PL + . ___



SINGLE RIGHT BOWL

ELESTONE FLAT TOP:

82254 ___-PL + . ___



SINGLE RIGHT BOWL

ELESTONE FLAT TOP:

82264 ___-PL + . ___



SINGLE RIGHT BOWL

ELESTONE FLAT TOP:

82274 ___-PL + . ___



ELESTONE 20MM TOP FINISHES

Select finish top code followed by your cabinet finish code
e.g. 750 Terina Wall Vanity in Dezigna White Gloss with
White EleStone Flat Top: 82220**EW**H-PL.11



EWH
White



EML
Moonlight



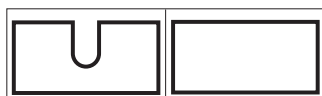
EMO
Motion

BOWL OPTIONS

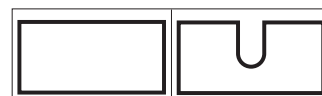
Terina Pro is available in double bowl, single left bowl and single right bowl options (excludes 750 and 900 options).



DOUBLE BOWL



SINGLE LEFT BOWL



SINGLE RIGHT BOWL

Soft Close Drawers
Moisture Resistant Board

Internal Drawer Finish
Manufactured in New Zealand

*Warranty excludes battery, lighting and electrical components. All guarantees are subject to terms and conditions and available at:
robertson.co.nz/warranties

25 Vestey Drive
Mt Wellington, Auckland 1060

PO Box 14695, Panmure
Auckland 1741, New Zealand

Ph: +64 9 573 0490
Fax: +64 9 573 0495
Email: sales@robertson.co.nz

ROBERTSON.CO.NZ



You can view and purchase our products nationwide from our supporting bathroom suppliers. To find your nearest location visit **ROBERTSON.CO.NZ** and click on the 'where to buy' link at the top of the page. Alternatively you can view products at our Robertson Bathware Showrooms at the locations below.

SHOWROOMS

A

AUCKLAND

ROBERTSON

25 Vestey Drive, Mt Wellington
Ph: (09) 573 0490

Open Monday to Friday 8.00am - 4.30pm
Open Saturday 9.00am - 1.00pm
Closed Sunday and public holidays

KITCHEN THINGS | LUXURY COLLECTION

26 Morrow Street, Newmarket
Ph: (09) 522 8375

Open 7 days 10am - 6pm

W

WELLINGTON

ROBERTSON

23 Marion St, Te Aro
Ph: (04) 595 1165

Open Monday to Friday 8.30am - 5pm
Closed Saturday and Sunday

For a bathware consultation please make an appointment by emailing sales@robertson.co.nz

C

CHRISTCHURCH

HOME IDEAS

37 Mandeville Street Riccarton
Ph: (03) 348 2863

Open Monday to Friday 9am - 4pm
Saturday 10am - 2pm Sunday 10am - 2pm

robertson

design.ideas™

ROBERTSON DESIGN IDEAS

Email: designideas@robertson.co.nz

ROBERTSONDESIGNIDEAS.CO.NZ



robertson®
trade

ROBERTSON TRADE PARTS & SERVICE CENTRE

42 Vestey Drive
Mt Wellington, Auckland 1060
Email: trade@robertson.co.nz

ROBERTSONTRADE.CO.NZ



ROBERTSON OUTLET STORE

42 Vestey Drive
Mt Wellington, Auckland 1060
Email: outlet@robertson.co.nz
By appointment only

www.trademe.co.nz/stores/robertson-bathware-outlet-store